

**PUBLIC PERSPECTIVE ON SOCIAL WORKERS INTERVENTION TOWARDS
VICTIMS OF HUMAN TRAFFICKING IN OKOGBO COMMUNITY**



BY

**OGBEIDA COURAGE
SSC1909944**

**DEPARTMENT OF SOCIAL WORK
FACULTY OF SOCIAL SCIENCES
UNIVERSITY OF BENIN
BENIN CITY.**

OCTOBER, 2023

**PUBLIC PERSPECTIVE ON SOCIAL WORKERS INTERVENTION TOWARDS
VICTIMS OF HUMAN TRAFFICKING IN OKOGBO COMMUNITY**

BY

**OGBEIDA COURAGE
SSC1909944**

**A RESEARCH PROJECT WRITTEN AND SUBMITTED TO THE
DEPARTMENT OF SOCIAL WORK, FACULTY OF SOCIAL SCIENCES,
UNIVERSITY OF BENIN, IN PARTIAL FULFILLMENT OF THE
REQUIREMENT FOR THE AWARD OF BACHELOR OF SCIENCE (B.Sc.)
DEGREE IN SOCIAL WORK.**

OCTOBER, 2023

CERTIFICATION

I hereby certify that this project was undertaken by **OGBEIDA COURAGE** **SSC1909944** and presented to the department of Social Work, in partial fulfillment of the requirement for the award of Bachelor of Science (B.Sc.) degree in Social Work.

OGBEIDA COURAGE
(The Researcher)

Date

Dr, K.A. Imafidon
(Project Supervisor)

Date

DR. SUNDAY OFILI IBOBOR
(H.O.D)

Date

DEDICATION

I dedicate this work to God almighty, for his protection and good health. Also Mr Emmanuel palmer who out of his his kindness has supported me. He taught me that with determination, hard work, and perseverance, anything is possible.

Thank you, late Mercy Ade, for your unwavering love and support. Even though you are no longer with me, your words of wisdom and encouragement remain etched in my heart. Your legacy lives on through this work, which I dedicate to you with love and gratitude. I also dedicate this work to my parents, who have been my pillars of support throughout my academic journey. Your unwavering love, encouragement, and sacrifices have enabled me to pursue my dreams.

Thank you for instilling in me the values of honesty, integrity, and perseverance that have helped me overcome obstacles and strive for excellence. This work is a testament to your unwavering support and the integral role you have played in shaping me into the person I am today.

Finally, I would like to dedicate this work to Mrs Beatrice Jedy-Agba and all the individuals who continue to inspire and motivate me every day. From my mentors and colleagues to my friends and family, your support has been the driving force behind my success.

This work is a reflection of the lessons I have learned, the challenges I have overcome, and the people who have inspired me. I dedicate it to each and every one of you with deep admiration and heartfelt gratitude.

ACKNOWLEDGEMENTS

I would like to express my gratitude to the following individuals who have helped me through the process of completing this project: Firstly, I would like to thank my supervisor for his guidance and support throughout this project. Your insights and suggestions have been invaluable in shaping my research and writing. My family and friends also deserve special recognition for their unwavering support, encouragement, and understanding during the challenging times of this project. I thank my university class mates who have shared their knowledge, experience, and offered valuable feedback on my work, which has been instrumental in enhancing my research. I also acknowledge the research participants without whom this study wouldn't have been possible. Their willingness and cooperation allowed me to gain valuable insights into my topic. Lastly, I would like to appreciate the countless individuals especially Dr. Christopher palmer who have contributed immensely to my journey, be it through offering advice, sharing resources, or simply being a supportive listener. Their generosity has been immensely valuable and made the process more enjoyable and rewarding than I could have anticipated. Thank you all.

TABLE OF CONTENTS

Cover page	-	-	-	-	-	-	-	-	-	i
Title	-	-	-	-	-	-	-	-	-	ii
Certification	-	-	-	-	-	-	-	-	-	iii
Dedication	-	-	-	-	-	-	-	-	-	iv
Acknowledgement	-	-	-	-	-	-	-	-	-	v
Table of Contents	-	-	-	-	-	-	-	-	-	vi

CHAPTER ONE: INTRODUCTION

1.1 Background to the Study	-	-	-	-	-	-	-	-	-	1
1.2 Statement of the Problem	-	-	-	-	-	-	-	-	-	3
1.3 Scope/Area of Study	-	-	-	-	-	-	-	-	-	4
1.4 Scope of the Study	-	-	-	-	-	-	-	-	-	5
1.5 Significance of the Study	-	-	-	-	-	-	-	-	-	5
1.6 Objectives of the Study	-	-	-	-	-	-	-	-	-	7
1.7 Research Questions	-	-	-	-	-	-	-	-	-	8
1.8 Definition of Key Concepts	-	-	-	-	-	-	-	-	-	9

CHAPTER TWO: LITERATURE REVIEW

2.1 Introduction	-	-	-	-	-	-	-	-	-	11
2.2 Defining Social Work	-	-	-	-	-	-	-	-	-	12
2.3 Human Trafficking Victims in Nigeria	-	-	-	-	-	-	-	-	-	13
2.4 Needs of Trafficking Victims	-	-	-	-	-	-	-	-	-	17

2.5 Organizations Providing Services to Trafficking Victims in Nigeria	-	19
2.6 Laws Protecting Trafficking Victims in Nigeria	- - - -	20
2.7 Social Work and Human Trafficking	- - - - -	21
2.8 Review of Relevant Theories-Marxist Perspective	- - -	22
2.9 Theoretical Framework	- - - - -- - -	25

CHAPTER THREE: RESEARCH METHODOLOGY

3.1 Research Design	- - - - -	30
3.2 Population of the Study	- - - - -	31
3.3 Sample Size and Sampling Techniques	- - - - -	32
3.4 Research Instrument-	- - - - -	32
3.5 Validity and Reliability of the Research Instrument	- - -	32
3.6 Methods of Data Collection	- - - - -	33
3.7. Method of Data Analysis	- - - - -	34
3.8. Ethical Consideration	- - - - -	34

CHAPTER FOUR: DATA PRESENTATION AND ANALYSIS

4.1 Data Presentation and Overview	- - - - -	35
4.2. Discussion of Findings	- - - - -	50

CHAPTER FIVE: SUMMARY, CONCLUSION AND RECOMMENDATIONS

5.1 Conclusion	- - - - -	55
5.2 Recommendations	- - - - -	56
5.3. Future Works	- - - - -	59

References	-	-	-	-	-	-	-	-	-	47
APPENDIX	-	-	-	-	-	-	-	-	-	66

CHAPTER ONE

INTRODUCTION

1.1. BACKGROUND OF THE STUDY

Globally, human trafficking is a serious violation of human rights and the psychological and social functioning impacts millions of people in all society including Nigerians. Nigeria is a source and transit nation for human trafficking, with many victims originating from vulnerable neighborhoods like Okogbo in Benin City, Edo State (Adepoju, 2019). Human trafficking is defined as the recruitment, transit, housing, or reception of persons for the purpose of exploitation using force, deception, or coercion (United Nations Office on Drugs and Crime, 2018). These people are taken advantage of in industries like commercial sex, manufacturing, domestic work, fishing, agriculture, and domestic work. 42% of victims are victims within their own nations, despite the fact that the majority of victims are trafficked across international borders (UNODC, 2016). 71% of the victims that have been found are female, and 28% are minors (UNODC, 2016).

In recent years, there has been a greater acknowledgement of the importance of social workers in addressing the complex needs of human trafficking victims (IOM & UNODC, 2009). Social workers play an important role in helping people recover from traumatic events and reintegrate into society by offering comprehensive support and interventions. Their interventions may include psychiatric therapy, access to healthcare services, legal

aid, vocational training, and family reunion assistance. (ILO (2009); IOM & UNODC (2009)).

A. The effectiveness of social workers' interventions in addressing the needs of human trafficking victims in Okogbo Community, on the other hand, is not extensively established. Understanding the public's perception of social workers' interventions is critical for a variety of reasons. initial, community members are frequently the initial point of contact for victims of human trafficking and may play an important role in discovering and reporting incidents. Their views and impressions about social workers can impact their desire to participate in intervention initiatives.

B. Furthermore, the community's perception of social workers' effectiveness in addressing human trafficking can shed light on the strengths and weaknesses of current intervention strategies. By identifying gaps and challenges, policymakers, government agencies, and NGOs can enhance and tailor their interventions to better meet the needs of the community and the victims. Community feedback is essential for the development of contextually appropriate and culturally sensitive approaches that maximize the potential for successful reintegration and long-term support.

The international economic undertone of trafficking in persons, as being predominantly emanating from poorer countries in the international system was given emphasis by the United Nations 1994 General Assembly when it described trafficking in persons as the illegal and clandestine smuggling or "movements of persons across national and

international borders, largely from developing countries (largely from African continent) and some countries in transition (largely from Eastern Europe and Asian continent) with the end goal of forcing women and girl children (especially) into sexually or economically oppressive and exploitative situations for the profit of recruiters, traffickers and crime syndicates." (UNICEF, 2011).

1.2. STATEMENT OF THE PROBLEM

1. How do Okogbo community members see the accessibility and availability of social workers' services for victims of human trafficking?
2. Are there any contextual or cultural elements unique to the Okogbo Community that affect how the community members perceive the interventions of social workers?
3. In combating human trafficking, how do members of the community see the cooperation and coordination between social workers and other players, such as law enforcement authorities and NGOs?
4. What do people of the community think about the sustainability and long-term effects of social workers' interventions promoting the rehabilitation and reintegration of trafficking victims?
5. How do locals in the community see the efficacy of social workers' community education and awareness-building efforts to stop human trafficking in the Okogbo Community?

1.3. SCOPE/AREA OF STUDY

Okogbo is a community located in the Orhionmwon Local Government Area of Benin City, which is the capital of Edo State, Nigeria. It is situated in the southern part of the country and falls within the Niger Delta region. Okogbo is a predominantly rural community, characterized by lush vegetation, farmlands, and a peaceful atmosphere. The community is home to the Okogbo people, who are mainly subsistence farmers and engage in agricultural activities as their primary source of livelihood. They cultivate crops such as yam, cassava, maize, and vegetables.

The community has a close-knit social structure with a traditional leadership system headed by a village head or traditional ruler. Cultural traditions and customs are still preserved and celebrated in Okogbo, and community members actively participate in various festivals and ceremonies.

In terms of infrastructure, Okogbo has basic amenities such as schools, healthcare centers, and places of worship. However, like many rural areas in Nigeria, there may be limitations in terms of access to reliable electricity, clean water, and good roads.

The community's economy is predominantly agrarian, with limited commercial activities. However, with its proximity to Benin City, some residents may engage in trade and other economic ventures outside the community. Overall, Okogbo is a peaceful and traditional rural community in the Orhionmwon Local Government Area of Benin City, where agriculture plays a vital role in the livelihood of its residents.

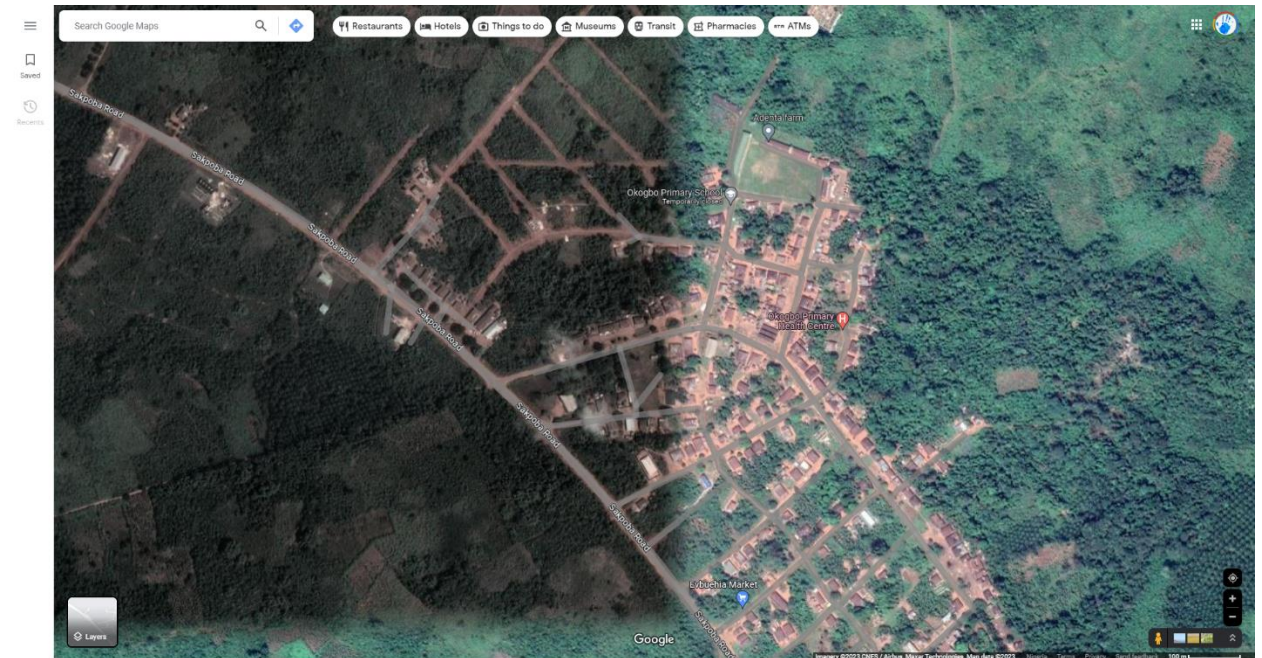


Figure 1: Satellite Imagery of Okogbo Community

1.4. SCOPE OF THE STUDY

The goal of this study is to better understand how the Okogbo Community in Benin City, Edo State, Nigerian, views social workers' assistance to victims of human trafficking. It seeks to collect opinions and ideas from Okogbo Community residents about social workers' interventions and their efficiency in combating human trafficking.

1.5 SIGNIFICANCE OF THE STUDY

This research contains considerable potential to contribute to academics, society, and different stakeholders involved in preventing human trafficking and helping victims. The findings of the study can have numerous important consequences and benefits. The study

addresses a research gap by providing insights into the public perspective on social workers' intervention towards victims of human trafficking in Okogbo Community, adding to the existing body of literature in the field of human trafficking interventions, social work practice, and community perspectives.

A. Informing future research: The study's findings can direct future research initiatives by suggesting areas that deserve greater analysis or examination, such as unique obstacles experienced by social workers or the impact of cultural variables on intervention effectiveness. The findings will inform policymakers, government agencies, and NGOs on the community's views, issues, and recommendations, allowing the development of evidence-based policies customized to Okogbo Community's particular needs and cultural context.

B. Improved victim support systems: Understanding the public perspective will contribute to improve victim support systems by identifying gaps and shortcomings in present treatments and establishing focused methods that prioritize victim rehabilitation, reintegration, and well-being. The study's findings can benefit social workers by giving a knowledge of the community's perspectives and suggestions, enabling them to better meet the needs and problems of Okogbo Community. This understanding can increase the efficacy of their treatments and assist them handle issues they may experience in their job.

C. Policymakers and government agencies: The findings can aid politicians and government agencies in establishing policies, guidelines, and tactics that match with the community's perceptions, boosting collaboration between social workers, law enforcement agencies, and other stakeholders. This coordination can lead to more effective and coordinated anti-trafficking measures.

The study allows community people to voice their ideas and recommendations, ensuring that their perspectives are taken into consideration in future actions. This participative strategy may empower the community, develop trust, and encourage a feeling of responsibility in fighting human trafficking. The study allows community people to voice their ideas and recommendations, ensuring that their perspectives are taken into consideration in future actions. This participative strategy may empower the community, develop trust, and encourage a feeling of responsibility in fighting human trafficking.

b. Long-term change: The project seeks to generate a lasting shift in attitudes, beliefs, and community responses to human trafficking by addressing the public's point of view, hence fostering a supportive environment for victims and lowering the prevalence of trafficking in the Okogbo Community.

1.6 OBJECTIVES OF THE STUDY

The main objective of the study is to examine Public perspective on social work intervention towards victims of human trafficking in Okogbo community.

1. Determine how much the Okogbo Community's residents are aware of human trafficking and the contribution social workers make to the fight against it.
2. Investigate how Okogbo Community residents view the efficiency of social workers' assistance and rehabilitation efforts for trafficking victims.
3. Determine the difficulties and restrictions social workers have when assisting Okogbo Community victims of human trafficking.
4. Collect suggestions from the Okogbo Community in order to enhance the efficiency of social workers' interventions and guard against future human trafficking.

1.7 RESEARCH QUESTIONS

In order to achieve the above objectives, I came up with the following research question.

The research question are stated as follows;

1. What are Okogbo community members' perspectives of social workers' roles and duties in combatting human trafficking?
2. How do Okogbo community members see the accessibility and availability of social workers' services for victims of human trafficking?
3. Are there any contextual or cultural elements unique to the Okogbo Community that affect how the community members perceive the interventions of social workers?
5. What do people of the community think about the sustainability and long-term effects of social workers' interventions promoting the rehabilitation and reintegration of trafficking victims?

6. How do locals in the community see the efficacy of social workers' community education and awareness-building efforts to stop human trafficking in the Okogbo Community?

1.8 DEFINITION OF KEY CONCEPTS

Some of the terms used in my thesis are described below;

1. Human trafficking: The recruitment, transportation, harboring, or receipt of persons through the use of force, fraud, or coercion for the purpose of exploitation, such as forced labor, sexual exploitation, or involuntary servitude (United Nations Office on Drugs and Crime, 2018).

2. Social workers: Professionals trained in the field of social work who provide assistance, support, and interventions to individuals, families, and communities in order to enhance their well-being and address social issues, including human trafficking (IOM & UNODC, 2009). Social workers may provide a wide range of services such as counseling, case management, advocacy, and referrals to other support services.

3. Public perspective: The viewpoints, attitudes, and opinions of community members in Okogbo towards social workers' interventions and their effectiveness in addressing human trafficking. Public perspective is important as it can influence community participation, support, and the development of contextually appropriate interventions (Okafor, 2018).

4. Rehabilitation and reintegration: The process of assisting and supporting trafficking victims in their recovery, healing, and successful return to society. Rehabilitation efforts may include physical and psychological care, access to healthcare services, education and vocational training, and social support. Reintegration involves providing victims with the necessary resources and support to resume a stable and fulfilling life, including assistance in finding employment, housing, and reconnecting with their families (ILO, 2009).

5. Community education and awareness-building: Activities and initiatives aimed at increasing community knowledge, understanding, and awareness of human trafficking. This may involve conducting workshops, seminars, or awareness campaigns to educate community members about the signs of trafficking, prevention strategies, and available support services. It also aims to empower community members to actively participate in efforts to combat trafficking (Mgbemena, 2017).

CHAPTER TWO

LITERATURE REVIEW

2.1 INTRODUCTION

The upcoming literature review takes a close look at several crucial issues that are essential to comprehending the problem of human trafficking, with a specific emphasis on Nigeria as a case study. It starts by providing a brief explanation of social work, which serves as the foundation for the analysis of human trafficking that follows. The emphasis then shifts to a thorough study of victims of human trafficking in Nigeria, spanning several subtopics to ensure a holistic viewpoint.

Determining the victim demographic, knowing the obstacles to victim identification, understanding the techniques used by individuals who engage in such illegal activity to attract new members, and detailing the operations themselves are some of these. Additionally, this investigation examines the prevalence and important factors related to human trafficking. Furthering the suffering of the victims, urgent requirements are emphasized, and several organizations that offer crucial services to trafficking victims in Nigeria are examined. The following section of the assessment examines the legal system in place, concentrating on Nigerian legislation designed to secure and protect these victims.

The literature recognizes social work's crucial role in the context of human trafficking beyond the victim-focused perspective, examining how social workers may promote change and offer required assistance.

To offer a more thorough knowledge of the problem, many theoretical frameworks are used. These include the General Systems Theory and the Ecological Systems Theory developed by Bronfenbrenner, which offer a comprehensive perspective of interrelationships. The hierarchy of needs described by Maslow sheds light on how to prioritize victim support. Last but not least, applying conflict theory and structural functional theory helps to comprehend the complex social and structural issues related to human trafficking.

2.2. DEFINING SOCIAL WORK

As noted by Gambrill (2003), definitions and practices may differ, but defining social work is essential if it is to be separated from other professions and made clear to service users and other important stakeholders. Following its annual general meeting in 2014, the International Federation of Social Work (IFSW) defined social work as a practice-based profession and an academic subject that supports social development, social cohesion, and the empowerment and emancipation of individuals. Social work is fundamentally based on the values of social justice, human rights, group responsibility, and respect for individual differences. Social work involves individuals and systems to solve life

difficulties and improve wellbeing. It is underpinned by social work ideas, social science theories, humanities theories, and indigenous knowledge. (IFSW, 2014).

Given that it contains all of the essential components of the profession and makes its objectives and distinguishing characteristics obvious, the aforementioned definition has now taken the lead in describing the nature of the social work profession. The primary goal of social work, according to Specht and Courtney (1994), is to "assist people in carrying out their regular life tasks and to use and develop community and social resources to build connections with others and reduce alienation and isolation.". Social workers fight socially unjust laws and systems that worsen the situation or impede the recovery of trafficking victims on the premise that all people have inherent value and dignity. The importance of a social work perspective on human trafficking is emphasized by Okech et al. (2012) in their article, which states that "it is critical in anti-trafficking efforts not only because of the professional guiding principles and values but also because of the holistic nature of social work interventions."

2.3. HUMAN TRAFFICKING VICTIMS IN NIGERIA

2.3.1. DEFINING THE POPULATION

For the purposes of this study, the phrase "victims of human trafficking" refers to people who have been kept against their will, have had their freedom curtailed, have been subjected to physical or sexual exploitation, and have been denied access to

opportunities, resources, and skills that may have changed their lives. 'Victims' and 'survivors' of trafficking are terms used interchangeably in this article.

2.3.2. IDENTIFYING THE VICTIMS

In Nigeria, human trafficking mostly affects women and children since males are frequently easy targets (Gesinde & Elegbeleye, 2011; Olagbegi, Aminu, Akiode, & Zacharia, 2006). The victims of internal trafficking and those who are exposed to international trafficking can be divided into two groups.

2.3.3. BARRIERS IN VICTIM IDENTIFICATION

According to research, social workers who have relationships to victims hardly ever spot sex traffickers (Macy & Graham, 2012). Due to their vulnerability, many sex trafficking victims—mostly children—go unnoticed and have less access to the programs designed to assist them flee their abusers and reintegrate into society (Gozdziaik & Macdonnell, 2007). Additionally, research shows that prostitution and trafficking for sex exploitation target women and children the most. Although prostitution and sex trafficking fall under separate legal categories, research indicates that sex trafficked victims may mistakenly associate prostitution with a risky lifestyle and health risk (Miko, 2003). Nevertheless, whether or not someone joins prostitution voluntarily, those who are forced, pressured, or persuaded into it are considered victims of trafficking (Macy & Graham, 2012). According to Macy and Graham (2012), little research has been focused on creating procedures or techniques to help social workers identify sex-trafficking victims.

Additionally, little attention has been paid to building best practices in daily routines for identifying sex-trafficking victims. Sadly, obstacles that social workers must overcome can include victims who fail to self-report because they are unaware of their rights, victims who do not identify as sex trafficking victims, victims' immigration status, intimidation and fear, and inconsistent terminology between sex trafficking and prostitution (Macy & Graham, 2012).

2.3.4. UNDERSTANDING THE RECRUITMENT PATTERN

Despite the secrecy surrounding it, Gesinde and Elegbeleye (2011) explain that potential victims are chosen from remote villages and other places where unwary parents are tricked into relinquishing custody of their kids in the belief that they will lead better lives in cities. The process of transnational trafficking, according to the authors, is similar to that of internal trafficking, with the exception that the victims are typically women who are chosen from both rural and urban areas and who are represented by an intermediary who works for the trafficker.

2.3.5. EXPLAINING THEIR ACTIVITIES

Children are trafficked into forced labor in street vending, mining, stone quarries, and alms begging while women and children are mostly trafficked for domestic slavery and forced labor outside the nation (Okeshola & Adenugba, 2018). Women are mostly trafficked outside of the nation for sexual exploitation, with Europe, the Middle East, and

other parts of the continent serving as their primary destinations (Gesinde & Elegbeleye, 2011).

2.3.6. THE RATE OF TRAFFICKING VICTIMS

The number of Nigerians who are victims of human trafficking is unknown with certainty. This is predicated on the fact that trafficking is illegal and is thus organized in a covert or extremely secretive way. Nevertheless, it's generally accepted that the rate of human trafficking is rising. According to certain studies, for instance, 20,000 persons are trafficked out of the nation each year (Olagbegi, Aminu, Akiode, & Zacharia, 2006), and around 80% of victims of sexual exploitation in Europe are Nigerians. More people are thought to be victims of domestic trafficking, even though these figures only include victims of cross-border trafficking. For instance, the International Labor Organization (ILO) and the International Program on the Elimination of Child Labor (IPEC) (2002) estimated that approximately 3.2 million children of the 8 million child laborers in the nation are victims of trafficking in their report titled *Unbearable to the Heart: Child Trafficking and Action to Eliminate It*.

2.3.7. DETERMINANTS OF HUMAN TRAFFICKING

Migration theories relate a variety of "push and pull factors" that are mostly outside the control of the victims to human trafficking. Gender inequality, poverty, unemployment, social inequality, political unrest, a lack of educational opportunities, conflict-related displacement, and family dissolution are push factors that make it more likely that

someone will become a victim of human trafficking (Okeshola & Adenugba, 2018; Ross-Sheriff & Orme). The need for better income, inexpensive labor and services, and the perception of increased life prospects in cities and abroad are pull factors that raise the risk of being trafficked.

According to Ross-Sheriff and Orme (2015), 'vulnerable populations that inhabit in places where many "push" factors are prevalent have raised the risk of entering the trafficking process'.

1.4 NEEDS OF TRAFFICKING VICTIMS

The catastrophic impacts of human trafficking on the psychological and social health of victims lead one to believe that these needs should be prioritized. Point being, victims of human trafficking need sufficient mental health treatments to help them get over the painful experience of being a victim. Williamson et al. (2008) claim that the mental health difficulties suffered by trafficking victims are comparable to those who have lived in or been subjected to torture when discussing the scope of the challenges to their mental health. Depression, anxiety disorders, suicidal thoughts, mood disorders, post-traumatic stress disorder (PTSD), dissociative disorders, and drug-related disorders are among the most prevalent mental health symptoms among victims of human trafficking (Ross-Sheriff & Orme; Williamson, Dutch, & Clawson, 2008).

Beyond mental health, victims of trafficking also need to have their social needs met because they are intertwined. The services, competencies, and capacities needed for

victims to be reintegrated into society at large are referred to as social needs. Clearly, concentrating on one component while ignoring the other would signal poor service performance. Therefore, it is crucial and equally important to consider the victims of human trafficking's mental and social wellbeing. Although it is not the goal of this article, it could be argued that, in the context of Nigeria and other developing nations, social needs of trafficked victims outweigh mental health needs because of the abundance of social capital (i.e., social support networks such as immediate families, extended families, distant relatives, and community resources); however, it is equally instructive to note that such social capital saturation cannot replace effective service delivery. It would be ineffective to attempt to restore the social functioning of trafficking victims if they are not given the necessary skills (such as employment skills training programs and other types of capacity-building initiatives), necessary for their transition or reintegration to mainstream society from where they can become fairly productive to national needs. Acting in this way appears in line with the profession of social work's goals for social progress. To that aim, social work treatments should give equal weight to the mental and social care spectrums, especially when it comes to removing structural obstacles that make vulnerable groups more susceptible to human trafficking. Interventions in social work are only really compatible with the field's person-in-environment orientation in the context of this activity.

2.5 ORGANIZATIONS PROVIDING SERVICES TO TRAFFICKING VICTIMS IN NIGERIA

The majority of services for victims of human trafficking in Nigeria are provided by the nonprofit sector. Under the direction of both governmental and commercial entities, this sector is organized. The government is directly accountable for addressing the needs of trafficking victims since both of these organizations—the latter of which works under a license from the government and the former of which was established by a law passed by Parliament—have legislative support. To be clear, non-governmental organizations (NGOs), faith-based organizations (FBOs), and civil society organizations (CSOs) are privately managed businesses that operate under government permits to offer aid to victims of human trafficking in Nigeria. The National Agency for the Prohibition of Trafficking in Persons and Other Related Matters (NAPTIP), on the other hand, is a government-run and -owned institution that offers assistance to victims of trafficking. While the activities of private nonprofit organizations are supported by contributions from private citizens, business entities, and the government, NAPTIP is entirely funded by tax dollars.

Cross-border victims of human trafficking are frequently the main recipients of the services provided by these organizations because of the relative ease in which they can be identified, despite the fact that these organizations are open to receiving both internal and cross-border categories of trafficking victims. Operationally, as a result of the Memorandum of Understanding (MoU) between the Nigerian government and the

deporting nations, as well as the cooperation between these organizations and law enforcement agencies, the victims are rescued and housed in a government facility after their deportation from which they receive a range of services.

2.6 LAWS PROTECTING TRAFFICKING VICTIMS IN NIGERIA

The Constitution of Nigeria (1999) sets forth measures for safeguarding all its citizens. However, specific provisions related to tackling trafficking issues are encapsulated in the Trafficking in Persons (Prohibition, Enforcement, and Administration) Act, amended in 2015 (TIP Act). This Act, influenced by the United Nations General Assembly's Protocol formulated in 2000, often referred to as the Palermo Protocol, underscores the importance of safety and underscores a commitment to the welfare of trafficking victims within Nigeria.

The TIP Act (2015), in its articulation of victim rights and treatment, states that trafficked persons shall not face detention or prosecution for offenses that resulted from their trafficking situation, under justifiable circumstances. Irrespective of their immigration status, victims are afforded the right to compensation and restitution and are to be facilitated in recovery from the economic, physical, and psychological damage experienced (Sections 62 and 65, Paragraph 1).

Furthermore, the Act mandates that victims of trafficking be granted access to adequate health and social services to facilitate their recovery. It also provides protection measures to shield victims from any form of intimidation, threats, and retaliation, whether from

traffickers, their accomplices, or individuals in positions of authority (Section 61, Paragraphs b and j).

2.7 SOCIAL WORK AND HUMAN TRAFFICKING

Research from various studies, like those conducted by Aberdein & Zimmerman (2015), Oram, Khondoker, Abas, Broadbent, & Howard (2015), and Rafferty (2018), sheds light on the intense repercussions of human trafficking. The mind bears a significant toll—trauma can manifest as PTSD, depression, anxiety, self-blame, and even suicidal thoughts, to name a few. Physically, victims may suffer from a wide range of distresses like neurological problems, fatigue, and substance abuse.

Furthermore, Hemmings et al. (2016), alongside Kiss and Zimmerman (2019), noted more personal, sexual and reproductive health consequences like unwanted pregnancies, HIV, and other sexually transmitted infections. An unsettling truth, however, is that despite trafficking's severe implications on health, it doesn't get enough attention from health professionals and governments.

The trauma inflicted by trafficking also reverberates in the victim's education and development. The studies show that victims often struggle with delayed development, along with deficits in memory, verbal, and language skills. When we comprehend the extensive implications of trafficking, we can create a framework to transform victims' lives effectively.

Considering the risk and far-reaching consequences, it's clear how critical professional psychosocial care and support are for trafficking victims. Spiritual care, as noted by Warria & Chikadzi (2020), should also be a part of this support.

For all involved in supporting victims, understanding trauma is key. Being aware that "when the support system works well, the victim receives the message that the support she has is stronger than traffickers and she regains the power she had lost by becoming a trafficking victim," is essential (Sambo & Spies, 2012).

These victims, whether adults or children, have diverse needs when rescued from exploitation. Therefore, it's imperative that the providers tailor their services thoughtfully, taking into account the trauma experienced and exhibiting sensitivity to the victims' needs, including preserving their right to make decisions about their aid. This brings us to the prominence of transcultural interventions, which sees the victims' complex needs in a comprehensive context and addresses these within a holistic framework (Rafferty, 2018). It highlights the crucial role that social workers play—they're not just a link to social and health care services; they're also instrumental in identifying victims and helping them access necessary services.

2.8 REVIEW OF RELEVANT THEORIES-MARXIST PERSPECTIVE

The Marxist perspective, also known as Marxism, is a socio-political and economic theory and framework developed by Karl Marx and Friedrich Engels in the 19th century. It provides a comprehensive lens for understanding and analyzing society, particularly

focusing on issues related to class struggle, capitalism, and the role of the state. It suggests that many societal outcomes are inherently influenced by economic factors.

I. Economic Exploitation: According to Marxist theory, economic exploitation lies at the heart of capitalism, where the bourgeoisie (capitalists) exploit the proletariat (working classes) for their labor. This exploitation extorts surplus value from the labor of the proletariat, causing inequity and class struggle. Drawing a parallel with human trafficking victims, they are often coerced into labor with little or no remuneration, representing an extreme form of exploitation. Social workers who intervene to support these victims could be envisioned as agents seeking to subvert this unjust economic system, striving to protect those taken advantage of due to their vulnerable socioeconomic status.

II. Class Struggle: If victims of human trafficking typically hail from economically disadvantaged groups or marginalized classes within the Okogbo community, a Marxist perspective would interpret this as a reflection of class struggle. From this perspective, human trafficking could be framed as a method through which the dominant classes perpetuate their exploitation of disadvantaged ones. Consequently, social workers' intervention efforts would be seen as crucial steps in supporting these victims, representing the larger struggle of the oppressed against their oppressors

III. Systemic Issues: Automatically, the Marxist perspective calls into question the prevailing social and economic systems that implicitly or explicitly facilitate human trafficking. It argues that capitalism inherently engenders socio-economic disparities

rendering certain groups more prone to such exploitation. The public perspective on the work of social workers within this paradigm could, therefore, oscillate between viewing their endeavors as necessary corrections to a fundamentally flawed system or insufficient band-aid solutions that don't address the root causes of the problem.

IV. Material Determinism: Marxism proposes that one's consciousness is greatly determined by their material conditions or social standing. In essence, our perceptions, experiences, and understanding of the world are intimately linked with our socioeconomic conditions. This concept could be useful in understanding how different segments of the Okogbo community perceive the intervention of social workers. The public's opinion could be swayed by their grasp of the socio-economic realities associated with human trafficking.

V. Hegemonic Control: Marxism also introduces the notion of hegemony, the dominance of one social group over others, often maintained by manipulating societal norms and beliefs to align with the ruling class's interests. Applying this to your thesis, it may be necessary to consider how public opinions could be influenced by prevailing norms or dominant ideologies that downplay the seriousness of human trafficking or overstate the effectiveness of social workers' interventions.

2.9 THEORETICAL FRAMEWORK

BRONFENBRENNER'S ECOLOGICAL SYSTEMS THEORY

The general systems theory is an influential concept that seeped into the realm of social work in the late 50's and early 60's. Originating from a biological model, this theory credited to Bertalanffy emphasizes seeing phenomena as part of larger, interconnected systems rather than isolated events (Kondrat, 2013).

It paints a picture of systems as myriad interconnected components, influencing and reacting to each other, as proposed by Berg-Weger (2005). In this context, every system can be seen as a subsystem of a larger system while simultaneously serving as an environment for others—a continuous exploration of the push and pull between different systems (Forder, 1976). Over time, this theory has been mostly supplanted by Bronfenbrenner's ecological model but still finds use in some corners of social work.

In the lens of social work, influential systems on an individual can be physical or social constructs, encompassing family, culture, workplace, communities, etc. (Berg-Weger, 2005). A primary objective of using the general systems theory in social work is to better grasp the concept of a “person in environment”—every individual as a cog in a larger machine, influenced by more extensive physical, social, and environmental systems (Berg-Weger, 2005). This perspective equips social workers with a broader understanding and hence, more opportunities to intervene.

However, the use of this theory hasn't been without criticism, with some arguing that it overlooks values and ideology and struggles to apply to the multifaceted nature of human experience (Kondrat, 2013; Shriver, 1998). Despite these, the theory serves as a tool to gauge the impact of inputs on an individual, the consequences, and how they regulate themselves—shifting focus to understanding the transactions between an individual and their surrounding systems (Skyttner, 1996; Kondrat, 2013).

Comparatively, there has been debate over the differences between general systems theory and ecological systems theory (Shriver, 1998). The potential shortcoming of general systems theory is that perceived assumption of equilibrium in the individual's life systems—that they inherently possess it and can achieve it (Leighninger, 1977). Meanwhile, the ecological systems theory, primarily propelled by Bronfenbrenner, explicitly involves nonliving elements—a fact only implied in the general systems theory (Shriver, 1998).

In the late 1970s and early 1980s, Bronfenbrenner's ecological systems theory mostly replaced the general systems theory, echoing the 'person in environment' concept but beckoning closer attention to the impact of an individual's environment on their behaviour (Kondrat, 2013; Berg-Weger, 2005).

Bronfenbrenner postulates that individual development happens within five influence-ridden systems: microsystem, mesosystem, exosystem, macrosystem, and chronosystem. This model visualizes these systems as concentric circles, each one larger and

encompassing wider parameters, influencing each other in multiple directions. More recent interpretations of this model label the chronosystem as a policy-level-system, indicating how policies and institutional-level processes affect individuals' smaller systems (Sallis & Owen, 2015). This idea conveys, every policy and institutional change potentially alters the way individuals live and navigate their life, by providing or removing constraints or supports.

In the end, Bronfenbrenner’s ecological systems theory places the individual at the heart of these five systems—delineating how they all interact to shape the individual's life. . . See Figure A.

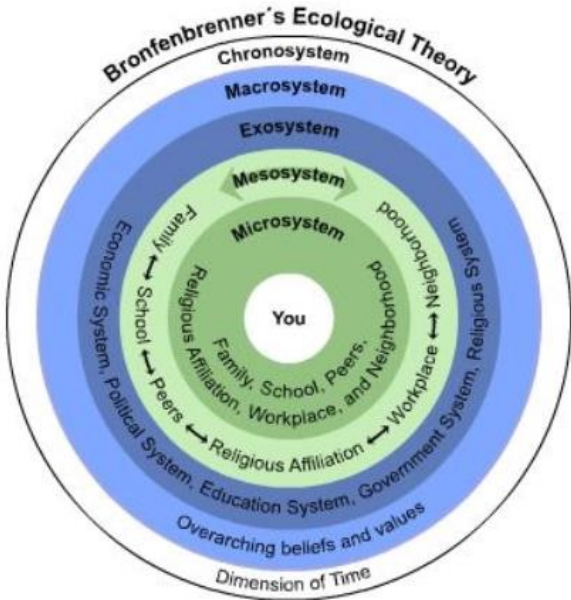


Figure 2: Bronfenbrenner's Ecological Theory

General systems theory and Bronfenbrenner's ecological systems theory both have practical applications when it comes to human trafficking and human rights interventions, even if they're not explicitly identified. Take, for example, a study conducted by Clawson and colleagues in 2003. They assessed the needs of trafficking victims and service providers. That research examined current efforts and services - the inputs, and how they were applied in taking care of victims - the throughput. The outcomes of these services - the outputs, were analyzed to see how they could inform future strategies for helping victims.

Since several years have passed since that assessment, it might be beneficial to reapply the general systems theory. By revisiting the current inputs, which have been shaped by past outputs and feedback loops, we could gain a fresh perspective on caring for trafficking victims.

Meanwhile, Bronfenbrenner's ecological systems theory is evident when evaluating risk factors associated with human trafficking and human rights violations. Factors such as poverty, a history of abuse or neglect, substance use problems, political instability, homelessness, and marginalized identities have been identified as elements that increase an individual's risk of becoming a victim of human trafficking.

The ecological systems model shines a light on these risk factors, assisting social workers in pinpointing areas where intervention and prevention efforts could be concentrated to protect those who are most vulnerable. It establishes a more holistic approach by

acknowledging the different environments (like an individual's family, community, or society) that a person interacts with and how they play a significant role in facilitating or mitigating trafficking risks. This approach contributes to a broader, more considered strategy in addressing trafficking from various angles.

CHAPTER THREE

RESEARCH METHODOLOGY

This chapter will delve into the methodologies employed in this investigation on the public's perspective on social workers' interventions towards victims of human trafficking in the Okogbo community. It will outline the study framework designed to explore, describe, explain, and assess how social workers' actions are viewed and understood amongst the public. Details on the sample group from which data was gathered will be provided, and the data collection methods will be comprehensively explained. Furthermore, this chapter will elucidate and critically examine the procedures adopted to relate the hypotheses to the research question and generate precise findings.

3.1. RESEARCH DESIGN

Adopting a quantitative research method, this study examines perceived effectiveness of social workers' interventions for human trafficking victims within the Okogbo community. The research focuses on gaining an understanding of public perceptions regarding the efforts employed by social workers and different organizations to mitigate human trafficking, and also aims to increase public awareness of these concerns.

As defined by Rubin and Babbie (2010), the goal of quantitative research is to understand the characteristics of a specific demographic by investigating the relationship among various factors. Key demographic variables captured in the initial part of the survey

include age, gender, ethnicity, years of residency in the Okogbo community, and the highest level of education attained.

Subsequent to the demographic section, the survey proceeds with 15 questions aiming to gauge public opinions about the role of social workers in identifying and aiding victims of human trafficking. An additional five questions are included to measure community awareness about human trafficking, wherein respondents can either 'Agree,' 'Disagree,' or indicate 'No Idea.' This design enhances the survey's accuracy in measuring public knowledge and perception about the contributions of social workers in their community.

The instrument in use adapts from previous studies and repurposes to evaluate participants' understanding, perception, and heightened awareness of identifying victims of human trafficking within the Okogbo community.

The chosen research method is a cross-sectional survey design. The adoption of this design is justified by its ability to capture data from participants at a single point in time, reflecting the variables of current interest, hence providing a snapshot of the situation regarding public awareness and perceptions about social workers' roles in combating human trafficking in the community.

3.2. POPULATION OF THE STUDY

In the Okogbo village of the Orhionmwon Local Government Area, Edo State, the study is aimed at the general population. According to the 2022 Census (National Population Commission, 2022), Orhionmwon Local Government Area has a population of 271,800.

3.3. SAMPLE SIZE AND SAMPLING TECHNIQUE

A simple random sampling approach will be used to pick the respondents for this study through a process of random selection. Within the Okogbo community, marketplaces, public transportation hubs, healthcare facilities, and educational institutions were among the locations considered for this study. For this inquiry, 400 respondents in total will be chosen. Respondents will be chosen at random from each of these groups and will include those exposed to or impacted by Okogbo community human trafficking concerns. The emphasis will be on learning more about how the public feels about social workers' assistance to victims of human trafficking.

3.4. RESEARCH INSTRUMENT

Data gathering involved the use of a questionnaire. There are two sections in the questionnaire. Demographic information on the respondent is provided in section A of the questionnaire. The questionnaire's section B focuses on the study's goal. Public opinion on social workers' assistance to Okogbo village victims of human trafficking.

3.5. VALIDITY AND RELIABILITY OF THE RESEARCH INSTRUMENT

The capacity of a research tool to measure what it was intended to assess is referred to as validity. There are several kinds of validity. However, in order to check the validity of the instrument, the researcher showed it to her supervisor and two more social work specialists. Their feedback, suggestions, and criticism were used to change the original research instrument. Reliability tests were conducted on the research tool in question.

3.6. METHOD OF DATA COLLECTION

For ease of completion and precise replies, the technique uses a well-structured questionnaire that is disseminated through direct interaction. The method of data collection employed in this study is primarily quantitative, utilizing a meticulously designed questionnaire as the primary tool. To ensure robust data collection and to address any ambiguities, the researcher will personally distribute the questionnaires and guide the respondents through the process of filling them out correctly.

The approach taken in this research incorporates a hybrid perception survey and awareness survey method. The perception survey methodology is designed to gather data directly from the core of the Okogbo community, who are most likely to witness and experience the repercussions of human trafficking and the response efforts of social workers and concerned organizations.

On the other hand, the awareness survey focuses on assessing the level of community-wide knowledge of human trafficking issues, its implications, and the integral role of social workers in tackling this problem within the community. This complementary approach allows for a comprehensive understanding of both the firsthand experiences and perceptions of the community residents, as well as their awareness of the broader scenario concerning human trafficking in the Okogbo community.

3.7. METHOD OF DATA ANALYSIS

Statistical Package for the Social Science (SPSS) software was used to analyze the quantitative data that had been compiled. Descriptive statistics, such as frequency, mean, and percentage, were utilized to examine the data and give context for the factors at play. This analytical tool was helpful for facilitating any extra analyses deemed required for the investigation.

3.8. ETHICAL CONSIDERATION

Prior to the start of the survey, every participant was given a very clear explanation of the study's goal, which was to explore how the Okogbo community's citizens felt about social workers' intervention efforts on behalf of trafficking victims. They were clearly informed of their rights to politely reject participation as part of an unwavering awareness of participant autonomy, and their agreement was painstakingly obtained before any questionnaire dissemination.

An emphasis was placed on the value of authenticity when responding to the questionnaire's questions in order to obtain undistorted results. Participants were sternly instructed to exclude any information that may be used to identify them from their replies in order to guarantee complete anonymity. They were also informed with confidence that all information obtained and any insights gained would be handled in accordance with strict confidentiality standards, maintaining openness while assuring discretion.

CHAPTER FOUR

DATA PRESENTATION AND ANALYSIS

Building on the research methodology mentioned in Chapter Three, we begin the journey of data analysis and interpretation in this chapter. Here, we use mathematical and statistical methods to analyze the datasets gathered, laying the framework for examining our study goals from Chapter One. The knowledge gathered in this chapter is crucial because it will influence the findings and policy suggestions made later in this study.

4.1. DATA PRESENTATION AND OVERVIEW

It is essential to summarize the data gathered and give a summary of the important factors before getting into the intricate details of data analysis. Summaries, graphs, and tables will be included in this area to help you communicate the information.

In order to examine the gathered data, we will use statistical software, especially the Statistical Package for the Social Sciences (SPSS), which builds on the quantitative research technique outlined in Chapter Three. We shall be able to comprehend the dynamics in the Okogbo community with relation to how the general public feels about social workers' interventions for victims of human trafficking thanks to this analytical technique.

Age, gender, ethnicity, years of residence in the Okogbo community, and the respondents' highest level of education will be the primary focus of the first part of our investigation. These elements are essential in forming the community's overall viewpoint.

The demographic analysis will be followed by a discussion of the research's main question, which is how the public feels about social workers' roles in detecting and aiding victims of human trafficking. The results of an analysis of 15 questions will reveal how the neighborhood views these initiatives.

We'll also look at replies to some inquiries about local knowledge of human trafficking. The alternatives for the respondents were "Agree," "Disagree," or "No Idea." Understanding the amount of community knowledge of the relevant issue and the involvement of social workers depends on this phase of the investigation.

Section A: Demographic Characteristics of the Respondents

Table 1: Demographic of Respondents

	Frequency	Percent	Cumulative Percentage
Gender			
Male	110	27.5	27.5
Female	290	72.5	100

Prefer not to say	0	0	100
Total	400		
Age			
Under 18	0	0	0
18-24	14	3.5	3.5
25-34	150	37.5	41.0
35-44	165	41.3	82.3
45-54	51	12.8	95.1
55-64	18	4.5	99.6
65 and Above	2	0.5	100
Total	400		
Marital Status			
Single	113	28.3	28.3
Married	200	50.0	78.1
Divorced	50	12.5	90.6
Widowed	25	6.3	96.9

Prefer no to say	12	3.0	100
Total	400		
Religious Affiliation			
Christian	250	62.5	62.5
Muslim	50	12.5	75
Traditional African Religion	75	18.8	93.8
Other	25	6.3	100
Total	400		
What is the highest level of education you have completed?			
Less than high school	100	25.0	25.0
High school diploma	38	9.5	34.5
Some college or vocational training	125	31.3	65.8
Bachelor's degree	75	18.8	84.6
Master's degree	25	6.3	90.9
Doctoral degree	12	3.0	93.9

Other	25	6.3	100
Total	400		
How long have you lived in the Okogbo community?			
Less than 1 year	50	12.5	12.5
1-5 years	150	37.5	50
6-10 years	125	31.3	81.3
More than 10 years	75	18.7	100
Total	100		

Source: Field Survey, 2023

Table 1 provide an insightful snapshot of the demographic characteristics of our respondents. Notably, 27.5% of the total respondents are male, while the majority, comprising 72.5%, are female, indicating a higher representation of female respondents. In terms of age distribution, 14.7% fall within the 18-23 age group, 47.3% are in the 24-29 age range, 22.7% fall between 30-35 years, and 15.3% are aged 36 and above. Furthermore, the data reveals that 67.3% of the respondents adhere to Christianity, 27.3% identify as Muslim, and 5.3% follow traditional African religious practices, signifying a predominantly Christian respondent base. Finally, when it comes to marital status, 16.7% of the total respondents are single, 74.7% are married, and 8.7% are divorced. These demographic insights will be instrumental in understanding the perspectives of the

respondents concerning social workers' interventions in addressing human trafficking in the Okogbo community.

Table 2: Public opinion on social workers' assistance to Okogbo village victims of human trafficking

Public opinion on social workers' assistance to Okogbo village victims of human trafficking							
Question	Have you ever encountered or been aware of human trafficking issues in your community?						
Response	Yes	No	Maybe				Total
Frequency	380	20	0				400
Percent	95	5					
Cumulative percentage	95	100					
Question	Have you ever had any personal involvement or contact with victims of human trafficking or social workers working with them?						
Response	Yes	No	Maybe				Total
Frequency	370	30	0				400

Percent	92.5	7.5					
Cumulative percentage	92.5	100					

--	--	--	--	--	--	--	--

Question	Do you have any prior knowledge of the role of social workers in addressing human trafficking issues?						
----------	---	--	--	--	--	--	--

Response	Yes	No	Maybe				Total
----------	-----	----	-------	--	--	--	-------

Frequency	370	30					400
-----------	-----	----	--	--	--	--	-----

Percent	92.5	7.5					
---------	------	-----	--	--	--	--	--

Cumulative percentage	92.5	100					
-----------------------	------	-----	--	--	--	--	--

Question	Effectiveness of Social Worker Assistance; Social workers effectively assist victims of human trafficking in Okogbo village.						

Response	Strongly	Disagree	Maybe	Neutral	Agree	Strongly	Total
----------	----------	----------	-------	---------	-------	----------	-------

	disagree					agree	
Frequency	0	10	0	0	280	110	400
Percent	0	2.5	0	0	70	27.5	
Cumulative percentage	0	2.5	2.5	2.5	72.5	100	

Question	Perception of Social Worker Challenges; Social workers face significant challenges in their efforts to assist victims of human trafficking in Okogbo village						
Response	Strongly disagree	Disagree	Maybe	Neutral	Agree	Strongly agree	Total
Frequency	0	0	0	0	250	150	400
Percent	0	0	0	0	62.5	37.5	
Cumulative percentage	0	0	0	0	62.5	100	

Question	Effectiveness of Current Anti-Trafficking Efforts; I think the current efforts to combat human trafficking in Okogbo village, including the work of social workers, are effective.						
----------	--	--	--	--	--	--	--

Response	Strongly disagree	Disagree	Maybe	Neutral	Agree	Strongly agree	Total
Frequency	20	10	0	0	270	100	400
Percent	5.0	2.5	0	0	67.5	25	
Cumulative percentage	5.0	7.5	7.5	7.5	75	100	
Question	Quality of Social Worker Assistance; The quality of assistance provided by social workers to victims of human trafficking in Okogbo village is consistently high.						
Response	Strongly disagree	Disagree	Maybe	Neutral	Agree	Strongly agree	Total
Frequency	20	10	0	0	270	100	400
Percent	5.0	2.5	0	0	67.5	25	
Cumulative percentage	5.0	7.5	7.5	7.5	75	100	
Question	Support for Social Worker Training; I believe that additional training and resources for social workers in Okogbo village would improve their ability to assist victims of human						

	trafficking						
Response	Strongly disagree	Disagree	Maybe	Neutral	Agree	Strongly agree	Total
Frequency	0	0	0	0	300	100	400
Percent	0	0	0	0	75	25	
Cumulative percentage	0	0	0	0	75	100	

Question	Impact of Social Worker Programs; Social worker programs have a positive impact on the overall well-being of victims of human trafficking in Okogbo village.						
Response	Strongly disagree	Disagree	Maybe	Neutral	Agree	Strongly agree	Total
Frequency	0	0	0	0	280	120	400
Percent	0	0	0	0	70	30	
Cumulative percentage	0	0	0	0	70	100	

Question	Community Support for Victims; The local community in Okogbo village actively supports the rehabilitation of trafficking victims.						
Response	Strongly disagree	Disagree	Maybe	Neutral	Agree	Strongly agree	Total
Frequency	30	50	45	0	200	75	400
Percent	7.5	12.5	11.3	0	50	18.7	
Cumulative percentage	7.5	20	31.3	0	81.3	100	

Question	Awareness of Social Worker Services; Many residents in Okogbo village are aware of the services provided by social workers to trafficking victims.						
Response	Strongly disagree	Disagree	Maybe	Neutral	Agree	Strongly agree	Total
Frequency	70	30	0	0	230	70	400
Percent	17.5	7.5	0	0	57.5	17.5	
Cumulative percentage	17.5	25	25	25	82.5	100	

Question	Effectiveness of Legal Measures: Legal measures against human trafficking in Okogbo village are effective in deterring potential traffickers.						
Response	Strongly disagree	Disagree	Maybe	Neutral	Agree	Strongly agree	Total
Frequency	0	0	0	0	300	100	400
Percent	0	0	0	0	75	25	
Cumulative percentage	0	0	0	0	75	100	

Question	Perception of Victim Vulnerability; Victims of human trafficking in Okogbo village are often vulnerable due to socioeconomic factors.						
Response	Strongly disagree	Disagree	Maybe	Neutral	Agree	Strongly agree	Total
Frequency	0	0	0	0	300	100	400
Percent	0	0	0	0	75	25	
Cumulative percentage	0	0	0	0	75	100	

Question	Trust in Social Worker Assistance; I trust that social workers in Okogbo village have the best interests of trafficking victims in mind.						
Response	Strongly disagree	Disagree	Maybe	Neutral	Agree	Strongly agree	Total
Frequency	0	0	0	0	300	100	400
Percent	0	0	0	0	75	25	
Cumulative percentage	0	0	0	0	75	100	

Question	Support for Awareness Campaigns; I support awareness campaigns in Okogbo village to educate the public about the dangers of human trafficking.						
Response	Strongly disagree	Disagree	Maybe	Neutral	Agree	Strongly agree	Total
Frequency	0	0	0	0	200	200	400
Percent	0	0	0	0	50	50	
Cumulative percentage	0	0	0	0	50	100	

Source: Field Survey, 2023

The opinions of Okogbo village residents about social workers' aid to trafficking victims are shown in Table 2. The results are summarized as follows:

95% of respondents have experienced or been aware of concerns related to human trafficking in their town, while 5% have not.

Personal Contact with Victims or Social professionals: Of the respondents, 92.5% reported having personal contact with either victims of human trafficking or the social professionals who assist them, with 7.5% reporting no such interaction.

Social workers' involvement: 92.5% of respondents were aware of their involvement in resolving issues related to human trafficking, whereas 7.5% were unaware of it.

Effectiveness of Social Worker Assistance: When asked if social workers in Okogbo Village successfully aid victims of human trafficking, 70% of respondents agreed, with 27.5% strongly agreeing, and 2.5% disagreeing.

Challenges perceived by social workers: In Okogbo village, social workers struggle to help victims of human trafficking, according to 62.5% of respondents, with 37.5% strongly agreeing.

Effectiveness of Current Anti-Trafficking Efforts: 67.5% of respondents believe that the current efforts to combat human trafficking in Okogbo village, including the work of social workers, are effective, while 25% do not.

Quality of Social Worker Assistance: 67.5% of respondents agree that the quality of assistance provided by social workers to victims of human trafficking in Okogbo village is consistently high, with 25% disagreeing.

Support for Social Worker Training: 75% of respondents believe that additional training and resources for social workers in Okogbo village would improve their ability to assist victims of human trafficking, while 25% do not.

Impact of Social Worker Programs: 70% of respondents agree that social worker programs have a positive impact on the overall well-being of victims of human trafficking in Okogbo village, with 30% strongly agreeing.

Community Support for Victims: 50% of respondents agree that the local community in Okogbo village actively supports the rehabilitation of trafficking victims, with 18.7% strongly agreeing, while 31.3% have mixed opinions.

Awareness of Social Worker Services: 57.5% of respondents are aware of the services provided by social workers to trafficking victims in Okogbo village, with 17.5% strongly disagreeing.

Effectiveness of Legal Measures: 75% of respondents agree that legal measures against human trafficking in Okogbo village are effective in deterring potential traffickers, while 25% do not.

Perception of Victim Vulnerability: 75% of respondents agree that victims of human trafficking in Okogbo village are often vulnerable due to socioeconomic factors, with 25% disagreeing.

Trust in Social Worker Assistance: 75% of respondents trust that social workers in Okogbo village have the best interests of trafficking victims in mind, with 25% neutral or unsure.

Support for Awareness Campaigns: 50% of respondents support awareness campaigns in Okogbo village to educate the public about the dangers of human trafficking, with 50% strongly agreeing.

These responses provide valuable insights into the public's perception of social workers' roles and the effectiveness of efforts to combat human trafficking in Okogbo village.

4.2. DISCUSSION OF FINDINGS

4.2.1. Demographic Characteristics of the Respondents

Several significant results that might provide insight into the backdrop of how the general public views social workers and their interventions in tackling human trafficking in the Okogbo community come from the examination of the demographic features of the respondents.

Gender Representation: The responders' stark gender discrepancy is one noteworthy finding. According to the data, there were 72.5% female respondents and just 27.5% male

respondents. The general viewpoints presented in the analysis that follows may be affected by this gender imbalance. Given that women are frequently disproportionately affected by issues linked to human trafficking, the larger presence of females may be an indication of their potential role or engagement in resolving these concerns.

Age Distribution: The respondents' age distribution is broad, including people in all age groups. While there is a fairly even distribution of respondents between the ages of 18 and 34, the amount of respondents 35 and older, who make up 43.7% of the entire sample, is significant. This older age group may contribute a more mature viewpoint to the conversation, maybe shaped by their life experiences and gradual exposure to local concerns.

Marital Status: Perspectives are also shaped by marital status. Married people make up the bulk of responders (50%), followed by single people (28.3%). Given that married people may have different goals and worries than single people, this distribution may have an influence on the opinions stated about the job of social workers.

Religious Affiliation: A significant element of the demographic features is religious affiliation. According to the data, 62.5% of respondents identify as Christians, 12.5% as Muslims, 18.8% practice traditional African faiths, and 6.3% as "Other" religions. The religious variety in the society is highlighted by this data, which may affect how people view social workers' roles and interventions from a cultural and religious standpoint.

Education Level: The respondents' educational backgrounds are likewise diverse, ranging from less than a high school diploma to PhD degrees. Notably, 18.8% have earned a bachelor's degree, while 31.3% have finished some form of college or vocational training. This educational variety may have an effect on respondents' critical thinking skills and level of knowledge when evaluating social worker treatments.

Residency Duration: A significant number (37.5%) of residents in the Okogbo neighborhood have resided there for between one and five years, while the length of stay varies. Understanding how the time of residence links to opinions of social worker treatments might help shed light on how familiarity and integration with the community affect viewpoints.

4.2.2. Public opinion on social workers' assistance to Okogbo village victims of human trafficking

Several important conclusions are drawn from the examination of public perception of social workers' aid to human trafficking victims in Okogbo village. These results shed important light on how the public views social workers' contributions to society and the efficiency of their interventions in resolving this pressing problem.

Awareness of Human Trafficking Issues: A startling 95% of respondents said they have come across or are aware of difficulties with human trafficking in their neighborhood. Given the high degree of knowledge, it is likely that human trafficking is a problem that affects Okogbo village often and that a sizeable section of the local population is

concerned about it. Such knowledge is essential for any successful attempt to prevent human trafficking because it establishes the basis for community involvement and support.

Personal Involvement with Victims or Social Workers: It is noteworthy that 92.5% of respondents reported having direct contact or participation with human trafficking victims or the social professionals who assist them. It proves that a sizable section of the community is directly or indirectly affected by the problem. Their thoughts and opinions on the efficacy of social worker services might be impacted by this personal engagement.

Knowledge of the Role of Social Workers: It is clear that social workers in Okogbo village are not working in isolation because 92.5% of respondents had prior knowledge of the role that social workers play in resolving human trafficking concerns. The neighborhood is aware of the duties and obligations of these experts. Building trust and cooperation between the community and social workers requires this understanding.

Effectiveness of Social Worker Assistance: According to the findings, a sizable 72.5% of respondents concur that social workers in Okogbo village successfully help those who have been the victims of human trafficking. In addition, this remark is highly agreed upon by 27.5% of respondents. The society supports and recognizes social workers' efforts to the fight against human trafficking, according to this favorable impression of their efficacy. The fact that social workers' initiatives are having an effect and receiving community support is heartening.

Perception of Social Worker Challenges: Conversely, a sizable majority of respondents (62.5%), with 37.5% strongly agreeing, concur that social workers in Okogbo village confront considerable hurdles in their efforts to assist those who have been the victims of human trafficking. This research emphasizes how social workers are understood to work in a hard setting by the general public. For the purpose of creating methods to overcome hurdles and improve the efficacy of treatments, it is crucial to comprehend these difficulties.

Effectiveness of Current Anti-Trafficking Efforts: The majority of respondents (67.5%) think that the existing initiatives in Okogbo village, including the work of social workers, are successful in preventing human trafficking. It is important to note that 25% of respondents do not hold this opinion. This shows that even while the present anti-trafficking initiatives are generally supported, there is still potential for development and addressing the concerns of those who are less confident in their effectiveness.

Quality of Social Worker Assistance: The fact that 67.5% of respondents think social workers routinely give victims of human trafficking in Okogbo village with high-quality help points to a favorable opinion of their services. However, it is crucial to take into account the 25% who disagree, since their viewpoints may indicate areas that require improvement.

CHAPTER FIVE

CONCLUSION, RECOMMENDATION AND FUTURE WORKS

In this last chapter, we summarize the findings from the other chapters and make suggestions based on the knowledge we've obtained from the data analysis. We also suggest potential directions for future investigation and additional steps to address the problem of human trafficking in the Okogbo community.

5.1. CONCLUSION

We now have a thorough grasp of how Okogbo village residents perceive social workers' interventions for victims of human trafficking thanks to the course of this research. Several important findings are drawn from the examination of respondents' demographic traits and popular opinion:

95% of respondents said they had come across or are aware of such concerns in their community, demonstrating the community of Okogbo's acute awareness of the problem of human trafficking. In addition, 92.5% of respondents said they had interacted directly or indirectly with human trafficking victims or the social workers who assist them. This high degree of engagement and awareness highlights how serious the issue is in the community.

Positive Perceptions of Social Workers: The majority of respondents hold positive perceptions of social workers' interventions. A significant 72.5% believe that social

workers effectively assist victims of human trafficking, and 67.5% consider the current anti-trafficking efforts, including the work of social workers, to be effective. Additionally, 67.5% believe that the quality of assistance provided by social workers is consistently high.

Recognition of Challenges: It is evident that respondents recognize the challenges faced by social workers in their efforts to assist victims of human trafficking. A substantial 62.5% agree that social workers face significant challenges in their work. This acknowledgment highlights the need for support and resources to overcome these challenges.

Room for Improvement: While there is overall support for the work of social workers, it is important to note that there are varying degrees of agreement among respondents. This suggests that there are areas where improvements can be made, both in the effectiveness of interventions and in addressing the concerns of those who have reservations.

5.2. RECOMMENDATIONS

The following suggestions are put forth to strengthen the fight against human trafficking in the Okogbo community based on the findings of the data analysis:

Strengthen Community Engagement: Given the high level of awareness and involvement within the community, it is essential to strengthen community engagement. This can be achieved through awareness campaigns, community forums, and partnerships with local organizations to mobilize support for anti-trafficking initiatives.

Address Challenges Faced by Social Workers: Recognizing the challenges faced by social workers, it is crucial to provide them with the necessary resources, training, and support to enhance their effectiveness. This includes addressing issues such as limited resources, caseloads, and emotional burnout.

Continuous Evaluation and Improvement: Regularly assess the effectiveness of anti-trafficking efforts and social worker interventions. Seek feedback from both victims and the community to identify areas for improvement and make necessary adjustments.

Education and Awareness: Continue and expand education and awareness campaigns within Okogbo village to educate the public about the dangers of human trafficking. This can involve schools, religious institutions, and community leaders in spreading awareness.

Collaboration with Stakeholders: Collaborate with local authorities, law enforcement agencies, and non-governmental organizations (NGOs) specializing in anti-trafficking efforts to create a coordinated and comprehensive approach to combat human trafficking.

5.3. FUTURE WORKS

While this research has provided valuable insights, there are several avenues for future research and action:

Longitudinal Studies: Conduct longitudinal studies to track changes in public perceptions and the effectiveness of interventions over time. This will provide insights into the impact of sustained efforts to combat human trafficking.

Victim-Centered Research: Undertake research that centers on the experiences and needs of human trafficking victims in Okogbo village to ensure that interventions are tailored to their specific requirements.

Policy Evaluation: Evaluate existing policies and legal measures against human trafficking in Okogbo to determine their efficacy and identify areas for legislative improvements.

Comparative Studies: Compare the findings from this study with similar research in other communities to identify regional variations in perceptions and develop region-specific interventions.

Capacity Building: Invest in building the capacity of local organizations and community leaders to play a more active role in anti-trafficking efforts.

References

- Aberdein, C., & Zimmerman, C. (2015). Access to mental health and psychosocial services in Cambodia by survivors of trafficking and exploitation: A qualitative study. *International Journal of Mental Health Systems*, 9(16). Retrieved from <http://dx.doi.org/10.1186/s13033-015-0008-8>
- Adepoju, A. (2019). Human Trafficking in Nigeria: The Plight of Women and Children. In *In Human Trafficking* (pp. 167-182). Springer.
- Bartlett, H. M. (2003). Working Definition of Social Work Practice. *Research on Social Work Practice*, 13(3), 267-70.
- Berg-Weger, M. (2005). *Social Work & Social Welfare: An Invitation*. McGraw-Hill.
- Bronfenbrenner, U. (n.d.). Ecological models of human development. *International Encyclopedia of Education*, 3. Retrieved from <http://edfa2402resources.yolasite.com/resources/Ecological%20Models%20of%20Human%20Development.pdf>
- Clawson, H., Small, K., Go, E., & Myles, B. (2003). Needs Assessment for Service Providers and Trafficking Victims. *Caliber Associates, Inc.* Retrieved from <https://www.ncjrs.gov/pdffiles1/nij/grants/202469.pdf>
- Forder, A. (1976). Social work and system theory. *The British Journal of Social Work*, 23-42. doi:10.1093/oxfordjournals.bjsw.a056695

- Gambrel, P., & Cianci, R. (2003). Maslow's Hierarchy of Needs: Does it apply in a collectivist culture. *Journal of Applied Management and Entrepreneurship*, 8(2), 143-156. Retrieved from <http://proxy.lib.ohio-state.edu/login?url=https://search-proquest-com.proxy.lib.ohio-state.edu/docview/203916225?accountid=9783>.
- Gambrill, E. (2003). Evidence-Based Practice: Sea Change or the Emperor's Clothes? *Journal of Social Work Education*, 39, 355 - 359.
- Gesinde, A. M., & Elegbeleye, A. (2011). An Investigation into Push Factors Sustaining Human Trafficking in Nigeria. *Journal of Functional Management*, 41(1), 147 - 157.
- Gezinski, L. B., & Karandikar, S. (2013). Exploring needs of sex workers from Kamathipura red-light area of Mumbai, India. *Journal of Social Service Research*, 552-561. doi:10.1080/01488376.2013.794758
- Gozdziak, M., & Macdonnell. (2007). Research on human trafficking in North America: A Review of Literature. *International migration*, 43(12), 99-128.
- Hemmings, S., Jakobowitz, S., Abas, M., Bick, D., Howard, L. M., Stanley, N., . . . Oram, S. (2016). Responding to the health needs of survivors of human trafficking: a systematic review. *BMC Health Services Research*. doi:10.1186/s12913-0161538-

- Hopper, E. (2016). Trauma-informed psychological assessment of human trafficking survivors. *Women & Therapy, 40*(1-2), 12-30.
doi:10.1080/02703149.2016.1205905
- Hutchison, E. (2013). Social work education: Human behavior and social environment. *Encyclopedia of Social Work*. doi:10.1093/acrefore/9780199975839.013.61
- IFSW. (2014). *The Global Definition of the Social Work Profession*. Retrieved from International Federation of Social Work: <http://www.ifsw.org/what-is-social-work/global-definition-of-social-work/>
- ILO. (2009). *Handbook for Professionals and Practitioners on Combating Human Trafficking*. ILO.
- IOM & UNODC. (2009). *Handbook on Establishing Effective Labour Migration Policies in Countries of Origin and Destination*. IOM & UNODC.
- Kiss, L., & Zimmerman, C. (2019). Human trafficking and labor exploitation: Toward identifying, implementing, and evaluating effective responses. *PLOS Medicine, 16*(1). doi:10.1371/journal.pmed.1002740
- Kondrat, M. E. (2013). Person-in-environment. *Encyclopedia of Social Work*.
doi:10.1093/acrefore/9780199975839.013.285

- Leighninger, R. (1977). Systems theory and social work: A reexamination. *Journal of Education for Social Work*, 44-49. Retrieved from <http://www.jstor.org.proxy.lib.ohio-state.edu/stable/23038730>
- Macy, R. J., & Graham, L. M. (2012). Identifying domestic and international. *Trauma Violence & Abuse*.
- Maslow, A. (1943). A theory of human motivation. *Psychological Review*, 370-396. Retrieved from <http://www.researchhistory.org/2012/06/16/maslows-hierarchy-of-needs/>
- Mgbemena, C. E. (2017). Assessing the Challenges of Human Trafficking Interventions in Nigeria: Implications for Social Work Practice. *Journal of Human Rights and Social Work*, 2(3), 98-111.
- Miko, F. T. (2003). *Trafficking in women and children: The U.S. and international response (Congressional Research Service Report for Congress; Publication No.: 30545)*. Retrieved from <http://fcp.state.gov/documents/organization/31990.pdf>
- Okafor, N. C. (2018). Social Work and Human Trafficking: A Nigerian Perspective. In *In Social Work Practice in Nigeria* (pp. 205-224). Springer.
- Okech, D., Morreau, W., & Benson, K. (2012). Human Trafficking: Improving Victim Identification and Service Provision. *International Social Work*, 55, 488-503.

- Okeshola, F. B., & Adenugba, A. A. (2018). Human Trafficking: Modern-Day Slavery in Nigeria', American. *International Journal of Contemporary Research*, 8, 40-44.
- Olagbegi, B. O., Aminu, L. S., Akiode, B. A., & Zacharia, Y. (2006). *Human Trafficking in Nigeria: Root Causes and Recommendations (UNESCO Policy Paper)*. Retrieved from <https://unesdoc.unesco.org/ark:/48223/pf0000147844>
- Oram, S., Khondoker, M., Abas, M., Broadbent, M., & Howard, L. M. (2015). Characteristics of trafficked adults and children with severe mental illness: A historical cohort study. *Lancet Psychiatry*, 1084-1091.
- Parillo, V. (2012). *Strangers to these Shores* (10th Ed.). *Pearson Education, Inc.*
- Payne, M. (2014). *Modern Social Work Theory*, 3rd edn. Chicago. IL: *Lyceum Books*.
- Rafferty, Y. (2018). Mental health services as a vital component of psychosocial recovery for victims of child trafficking for commercial sexual exploitation. *American Journal of Orthopsychiatry*, 88(3), 249-260.
- Reed, S., Kennedy, M., Decker, M., & Cimino, A. (2019). Friends, family, and boyfriends: An analysis of relationship pathways into commercial sexual exploitation. *Child Abuse & Neglect*, 90, 1-12. doi:10.1016/j.chiabu.2019.01.016
- Ross-Sheriff, F., & Orme, J. (n.d.). 'Human Trafficking: Overview', *Encyclopedia of Social Work*. National Association of Social Work Press and Oxford University Press. Retrieved from

<https://oxfordre.com/socialwork/view/10.1093/acrefore/9780199975839.001.0001/acrefore-9780199975839-e-945>

Rubin, A., & Babbie, E. R. (2010). *Research Methods for Social Work*. 35.

Rössel, J. (2013). Conflict theory. *Oxford Bibliographies in Sociology*.

doi:10.1093/OBO/9780199756384-0035

Sallis, J. F., & Owen, N. (2015). Chapter 3: Ecological models of health behavior. *In K. Glanz, B. K. Rimer, & K. Viswanath (Eds.), Health behavior: Theory, research, and practice (5th ed.)*, 43-65.

Sambo, J. P., & Spies, G. (2012). The role of the social worker in the prevention of child trafficking in South Africa. *Social Work/Maatskaplike Werk*, 113-131.

Shriver, J. (1998). *Human Behavior and the Social Environment: Shifting Paradigms in Essential Knowledge for Social Work Practice (2nd Ed.)*. Allyn & Bacon. Needham Heights.

Skyttner, L. (1996). General Systems Theory: Origin and hallmarks. *Kybernetes*, 25(6), 16-22. doi:10.1108/03684929610126283

Smith, L., Vardaman, S., & Snow, M. (2009). *The National Report on Domestic Minor Sex Trafficking America's Prostituted Children*. Shared Hope International. Retrieved from http://sharedhope.org/wp-content/uploads/2012/09/SHI_National_Report_on_DMST_2009.pdf

- Specht, H., & Courtney, M. E. (1994). *Unfaithful Angels: How Social Work Has Abandoned Its Mission*. *New York: The Free Press.*, 26.
- Stotts, E., & Ramey, L. (2009). Human trafficking: A call for counselor awareness and training. *Journal of Humanistic Counseling, Education and Development*, 25(6), 36-47. doi:10.1108/03684929610126283
- UNICEF. (2011). *UNICEF annual report 2011*.
- UNODC. (2016). UNODC ANNUAL REPORT.
- Warria, A., & Chikadzi, V. (2020). Human trafficking and spirituality: Guidelines for social work spiritual counselling. *Journal of Social Development in Africa*, 34(2), 39-66.
- Williamson, E., Dutch, N. M., & Clawson, H. J. (2008). *Evidence-Based Mental Health Treatment for Victims of Human Trafficking*. *Washington, DC: Office of the Assistant Secretary for Planning and Evaluation, US Department of Health and Human Services*.

APPENDIX

QUESTIONNAIRE

**DEPARTMENT OF SOCIAL WORK
FACULTY OF SOCIAL SCIENCES
UNIVERSITY OF BENIN
BENIN CITY**

DEMOGRAPHICS

This questionnaire is designed to gather demographic information from participants as part of the research project titled "**Public Perspective on Social Workers 'Intervention towards Victims of Human Trafficking in Okogbo Community'**".

Thank you for participating in this important research project. Your responses will help us better understand the demographics of our study population. Please answer the following questions honestly and to the best of your ability. Your responses will be kept confidential.

Instruction: Please tick [v] box that is appropriately.

1. Gender: Male [] Female [] Prefer not to say []
2. Age: Under 18 [] 18-24 [] 25-34 [] 35-44 [] 45-54 [] 55-64 [] 65 and Above []
3. Marital Status: Single [] Married [] Divorced [] Widowed [] Prefer no to say []

4. Religious Affiliation *Mark only one oval:* Christian [] Muslim [] Traditional African Religion [] Other (specify): _____
5. What is the highest level of education you have completed? Less than high school [] High school diploma [] Some college or vocational training [] Bachelor's degree [] Master's degree [] Doctoral degree [] Other (specify): _____
6. Current Occupation: _____
7. Where do you currently reside? (City/Town): _____
8. How long have you lived in the Okogbo community? Less than 1 year [] 1-5 years [] 6-10 years [] More than 10 years []

PUBLIC OPINION ON SOCIAL WORKERS' ASSISTANCE TO OKOGBO

VILLAGE VICTIMS OF HUMAN TRAFFICKING

9. Have you ever encountered or been aware of human trafficking issues in your community? Yes [] No []
10. Have you ever had any personal involvement or contact with victims of human trafficking or social workers working with them? Yes [] No []
11. Do you have any prior knowledge of the role of social workers in addressing human trafficking issues? Yes [] No [] Maybe []

12. Effectiveness of Social Worker Assistance; Social workers effectively assist victims of human trafficking in Okogbo village. Strongly disagree [] Disagree [] Neutral [] Agree [] Strongly agree []
13. Perception of Social Worker Challenges; Social workers face significant challenges in their efforts to assist victims of human trafficking in Okogbo village. Strongly disagree [] Disagree [] Neutral [] Agree [] Strongly agree []
14. Perceived Severity of Human Trafficking; I believe that the issue of human trafficking in Okogbo village is a serious concern. Strongly disagree [] Disagree [] Neutral [] Agree [] Strongly agree []
15. Effectiveness of Current Anti-Trafficking Efforts; I think the current efforts to combat human trafficking in Okogbo village, including the work of social workers, are effective. Strongly disagree [] Disagree [] Neutral [] Agree [] Strongly agree []
16. Quality of Social Worker Assistance; The quality of assistance provided by social workers to victims of human trafficking in Okogbo village is consistently high. Strongly disagree [] Disagree [] Neutral [] Agree [] Strongly agree []
17. Support for Social Worker Training; I believe that additional training and resources for social workers in Okogbo village would improve their ability to

assist victims of human trafficking. Strongly disagree [] Disagree [] Neutral [] Agree [] Strongly agree []

18. Impact of Social Worker Programs; Social worker programs have a positive impact on the overall well-being of victims of human trafficking in Okogbo village. Strongly disagree [] Disagree [] Neutral [] Agree [] Strongly agree []

19. Community Support for Victims; The local community in Okogbo village actively supports the rehabilitation of trafficking victims. Strongly disagree [] Disagree [] Neutral [] Agree [] Strongly agree []

20. Awareness of Social Worker Services; Many residents in Okogbo village are aware of the services provided by social workers to trafficking victims. Strongly disagree [] Disagree [] Neutral [] Agree [] Strongly agree []

21. Effectiveness of Legal Measures; Legal measures against human trafficking in Okogbo village are effective in deterring potential traffickers. Strongly disagree [] Disagree [] Neutral [] Agree [] Strongly agree []

22. Perception of Victim Vulnerability; Victims of human trafficking in Okogbo village are often vulnerable due to socioeconomic factors. Strongly disagree [] Disagree [] Neutral [] Agree [] Strongly agree []

23. Trust in Social Worker Assistance; I trust that social workers in Okogbo village have the best interests of trafficking victims in mind. Strongly disagree []
Disagree [] Neutral [] Agree [] Strongly agree []
24. Support for Awareness Campaigns; I support awareness campaigns in Okogbo village to educate the public about the dangers of human trafficking. Strongly disagree [] Disagree [] Neutral [] Agree [] Strongly agree []